

MANN +  
HUMMEL

ScandMist 400D  
Oil mist filtration  
system

ScandMist

# ScandMist 400D

## Oil mist filtration system

### ScandMist 400D

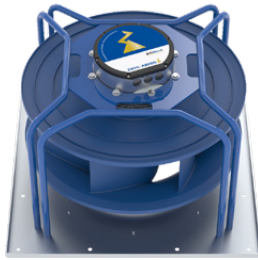
Nominal capacity: 4000 m<sup>3</sup>/h

| General                    | Version                      | EC motor                           | Induction motor                    |
|----------------------------|------------------------------|------------------------------------|------------------------------------|
|                            | Part number                  | 9709016069                         | 9709016081                         |
| <b>Connections</b>         | Inlet type                   | Jacobs                             | Jacobs                             |
|                            | Inlet diameter               | 315 mm                             | 315 mm                             |
|                            | Drain                        | 2 off, 2" threaded (BS 21) female  | 2 off, 2" threaded (BS 21) female  |
|                            | Air inlet options            | Left or right                      | Left or right                      |
|                            | Exhaust                      | 315 mm diameter with 340 mm flange | 315 mm diameter with 340 mm flange |
| <b>Filters</b>             | Filters/stage                | 2                                  | 2                                  |
|                            | Stage 1 filter               | 9709006026                         | 9709006026                         |
|                            | Stage 2 filter               | 9709006027                         | 9709006027                         |
|                            | Stage 3 filter               | 5211343315                         | 5211343315                         |
|                            | Final pressure drop          | 2250 Pa                            | 2250 Pa                            |
| <b>Motor Options</b>       | <b>Type</b>                  | <b>Electrically commutated</b>     | <b>AC Induction</b>                |
|                            | Part number                  | 7400010752                         | 7400010725                         |
|                            | Quantity                     | 2                                  | 2                                  |
|                            | Mains supply                 | 3- 400V 50Hz                       | 3- 400V 50Hz                       |
|                            | Ventilation                  | TEFC                               | TEFC                               |
|                            | Power consumption*           | 2.8 kW x 2                         | 2.2 kW x 2                         |
|                            | Maximum current              | 4.4 A x 2                          | 12.2 A                             |
|                            | Speed                        | Max 4100 rpm                       | 2950 rpm                           |
|                            | Environmental protection     | IP54                               | IP55                               |
|                            | Efficiency class             | IE4 compliant                      | IE3                                |
| <b>Physical properties</b> | Dimensions (W x H x D)       | 770 x 2038 x 1312 mm               | 770 x 2238 x 1312 mm               |
|                            | Weight with clean filters    | 370 kg                             | 462 kg                             |
|                            | Noise level                  | < 69 dB(A)                         | < 69 dB(A)                         |
|                            | Fan                          | Backward bent blades               | Backward bent blades               |
|                            | Finish                       |                                    |                                    |
| <b>Controls</b>            | Control system               | Micaflex MF-PFT                    | Danfoss FC102P7K5T4                |
|                            | Differential pressure gauges | 3 off                              | 3 off                              |
| <b>Options</b>             | Integrated pump              | Jabsco, part number 23670-4003     | Jabsco, part number 23670-4003     |
|                            | Exhaust transition           |                                    |                                    |
|                            | Flange inlet connection      |                                    |                                    |

\*At final pressure drop

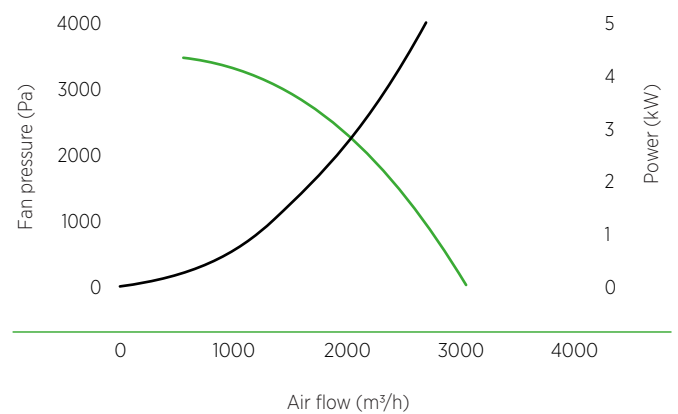
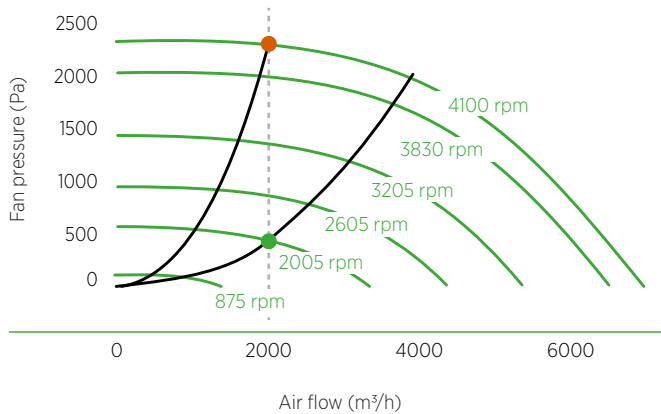
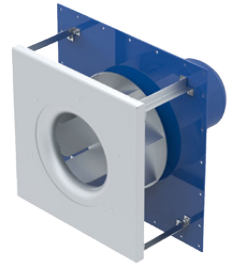
## EC fan and motor Fitted as standard

The standard EC fan and motor delivers good energy efficiency with quiet operation.



## IE3 ventilator Available as an option

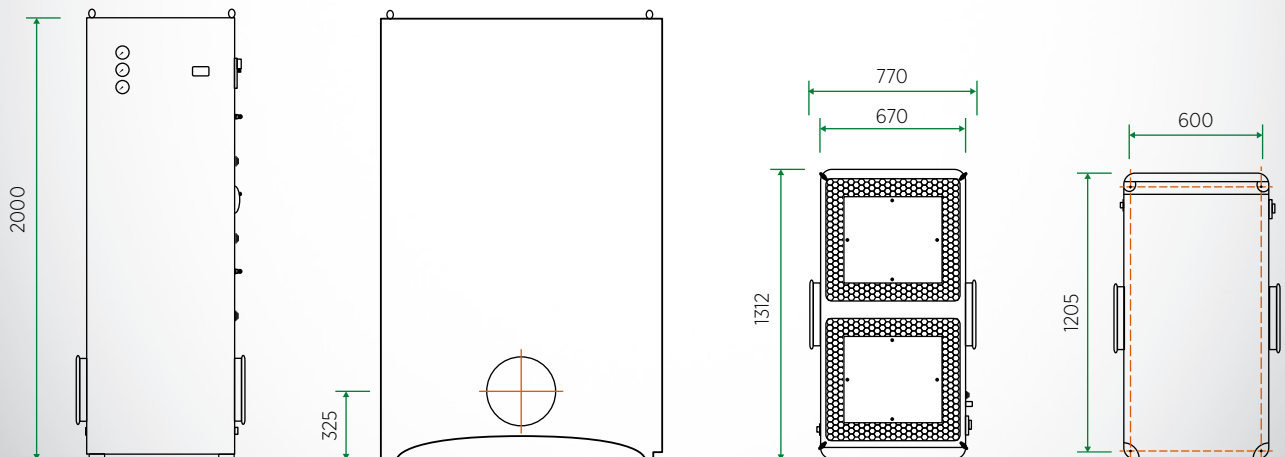
An optional IE3 configuration takes performance to the next level with exceptionally low energy consumption.



● Operating point - initial pressure drop    ● Operating point - final pressure drop    — Power    — Fan pressure

## Dimensions and weight Units: mm

| Weight        | kg     |
|---------------|--------|
| Empty         | 260 kg |
| Clean filters | 370 kg |
| Wet filters   | 455 kg |





0617 Printed in Germany © MANN+HUMMEL