



MANN+
HUMMEL

ScandMist
200D OEM MD
Oil mist filtration
system

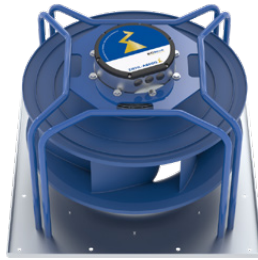
ScandMist 200D OEM MD

Oil mist filtration system

General	Product	Units	ScandMist 200D OEM MD
	Application		Emulsion
	Capacity (nominal)	m ³ /h	2000
	Part number		D1B20DB100000A
Connections	Inlet type		Jacobs
	Inlet diameter	mm	200
	Drain		2 off, 2" Threaded (BS 21) Female
	Air inlet options		Left/Right/Back/Bottom
	Exhaust		Right
Filters	Filters/stage		1
	Stage 1 filter (coalescer)		9709006027
	Stage 2 filter (HEPA H13)		800527035232
	Stage 3 filter (activated carbon)		Option
	Available external pressure drop	Pa	200
Motor	Type		Electrically commutated
	Part number		9709005278
	Quantity		1
	Mains supply		3 - 380-480 V, 50/60 Hz
	Ventilation		TEFC
	Power	kW	3,7
	Maximum current	A	4,6
	Speed	RPM	Max 4100
	Environmental protection		IP54
Physical properties	Width	mm	1203
	Height	mm	832 (excluding inlet transition)
	Depth	mm	789 (excluding inlet transition)
	Weight	kg	Clean filters: 170, Wet filters: 210
	Noise level	dB(A)	<69
	Fan		Backward bent blades
	Finish		Powder coating inside and outside
Controls	Control system		Micaflex MF-PFA
	Differential pressure gauges		2 off
Options	Oil pump		N/A
	Level sensor		9908900187
	Prefilter demister		Included
	Spray		Not included
	Silencer		Insulated fan housing
	Airmat Eco NoGlass		Not included

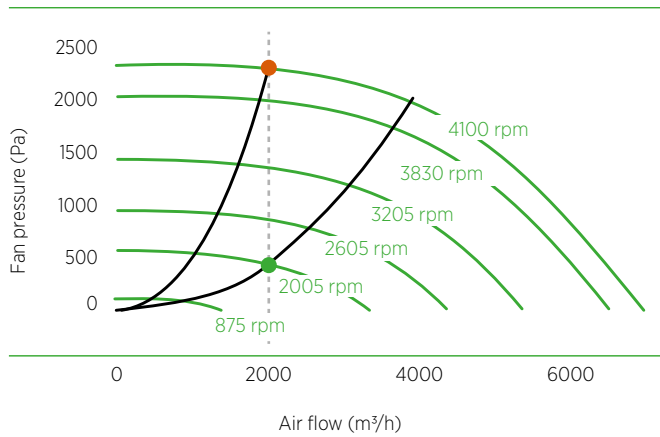
EC fan and motor

The standard EC fan and motor delivers good energy efficiency with quiet operation.



Connecting interface

Wiring via a Harting male/female connector. Quick and easy installation with all connecting interfaces at one spot.

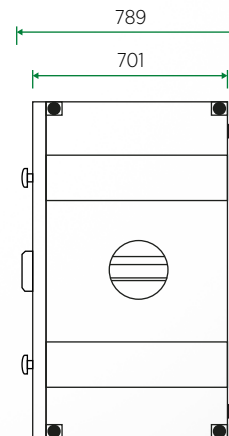
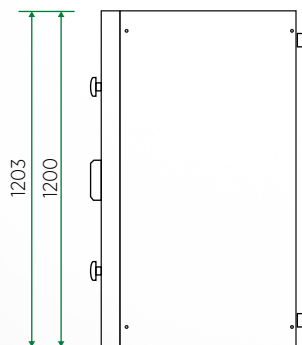
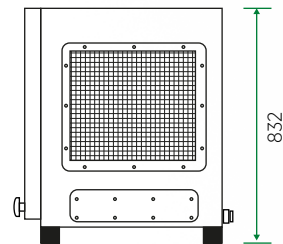
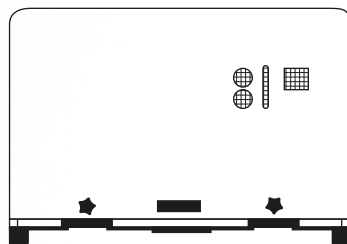


- Operating point - initial pressure drop
- Operating point - final pressure drop
- Power
- Fan pressure

Power		Signal exchange	
1	L1	1	ON/OFF (make contact)
2	L2	2	M
3	L3	3	Output Signal: In Operation
4	N	4	M
5	PE	5	AL1
		6	M
		7	AL2
		8	N
		9	AL3
		10	N
		11	Reset
		12	N
		13	AI2
		14	N

Dimensions

Units: mm



**MANN +
HUMMEL**

