

MANN+
HUMMEL

ScandMist
100R OEM MD
Oil smoke
filtration system

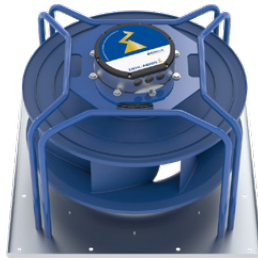
ScandMist 100R OEM MD

Oil smoke filtration system

General	Product	Units	ScandMist 100R OEM MD
	Application		Neat Oil
	Capacity (nominal)	m ³ /h	1000
	Part number		D1B10RB100000A
Connections	Inlet type		Jacobs
	Inlet diameter	mm	200
	Drain		2 off, 2" Threaded (BS 21) Female
	Air inlet options		Left/Right/Back/Bottom
	Exhaust		Right
Filters	Filters/stage		1
	Stage 1 filter (coalescer)		9709006038
	Stage 2 filter (HEPA H13)		800527035232
	Stage 3 filter (activated carbon)		Option
	Available external pressure drop	Pa	200
Motor	Type		Electrically commutated
	Part number		9709005278
	Quantity		1
	Mains supply		3 - 380-480 V, 50/60 Hz
	Ventilation		TEFC
	Power	kW	3,7
	Maximum current	A	4,6
	Speed	RPM	Max 4100
	Environmental protection		IP54
Physical properties	Width	mm	1203
	Height	mm	832 (excluding inlet transition)
	Depth	mm	789 (excluding inlet transition)
	Weight	kg	Clean filters: 170, wet filters: 210
	Noise level	dB(A)	<69
	Fan		Backward bent blades
	Finish		Powder coating inside and outside
Controls	Control system		Micaflex MF-PFA
	Differential pressure gauges		2 off
Options	Oil pump		N/A
	Level sensor		9908900187
	Prefilter demister		Included
	Spray		Not included
	Silencer		Insulated fan housing
	Airmat Eco NoGlass		Not included

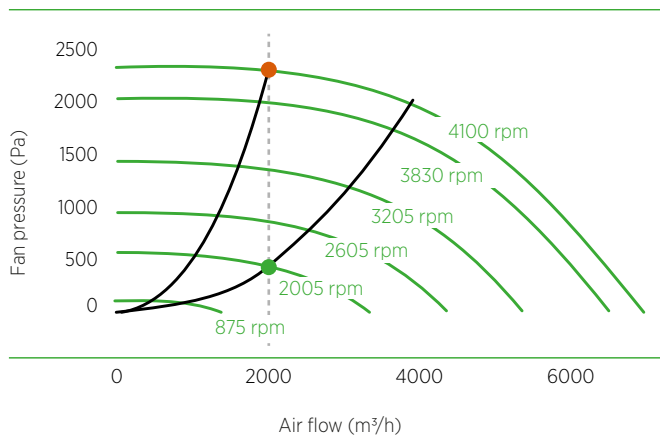
EC fan and motor

The standard EC fan and motor delivers good energy efficiency with quiet operation.



Connecting interface

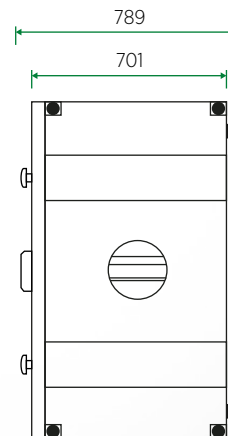
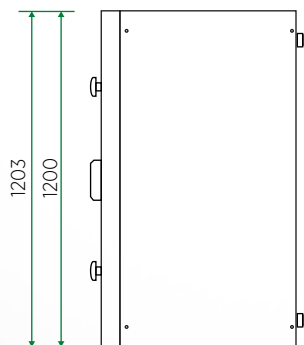
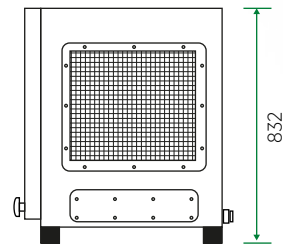
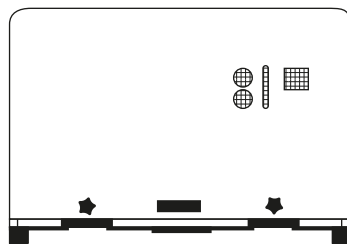
Wiring via a Harting male/female connector. Quick and easy installation with all connecting interfaces at one spot.



- Operating point - initial pressure drop
- Operating point - final pressure drop
- Power
- Fan pressure

Power		Signal exchange	
1	L1	1	ON/OFF (make contact) Input: ON/OFF
2	L2	2	M
3	L3	3	Output Signal: In Operation Output: In Operation
4	N	4	M
5	PE	5	AL1 Alarm 1, Motor/Power
		6	M
		7	AL2 Alarm 2, System pressure high/low/operation signal
		8	N
		9	AL3 Alarm 3, System pressure high/low/operation signal
		10	N
		11	Reset Reset for alarms
		12	N
		13	AI2 Analog output 2 of Micaflex MF-PFA
		14	N

Dimensions Units: mm



**MANN +
HUMMEL**

