

## Overview of the H 34 series

Our EDM product portfolio offers the right solution for every requirement:

### Housing materials

- Metal
- Plastic

### Filter media

- Cellulose
- Synthetic

### Connection possibilities

- Stand-alone via connection adapters in the '14 versions' (e.g. H 34 1490/14 KIT\*)
- Installation cartridge via center tube in the '15 versions' (e.g. H 34 1490/15 KIT\*)

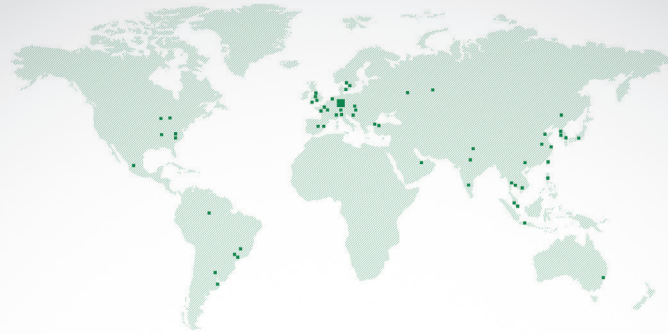


### Maintenance-friendly handles

- Metal handles
- Plastic handles



\*KIT: Accessories enclosed, e.g. adapter or plastic handles.



## About MANN+HUMMEL

MANN+HUMMEL is the leading global expert for filtration technology. The company group with its headquarters in Ludwigsburg, Germany, develops solutions for motor cars, industrial applications, clean air and the sustainable use of water. In 2018 the group achieved sales of approx. 4 billion euros worldwide with more than 20,000 employees at more than 80 locations. The products manufactured by the group include air cleaner systems, intake manifold systems, liquid filter systems, plastic components, filter media, cabin filters, industrial filters and membrane filters.

Further information about MANN+HUMMEL is available at [www.mann-hummel.com](http://www.mann-hummel.com)

## MANN+HUMMEL EDM filtration Overview of the H 34 series





# The Baseline Good

<b>Pleat</b>	Single bellow
<b>Medium</b>	Cellulose
<b>Pressure stability</b>	2.5 bar
<b>Service life</b>	+
<b>Filter fineness</b>	3 - 5 µm

### Metal H 34 1070

- Without handles
- Available as H 34 1070/14 KIT or H 34 1070/15



# The Allrounder Better

<b>Pleat</b>	W-pleat
<b>Medium</b>	Cellulose
<b>Pressure stability</b>	3.0 - 3.5 bar
<b>Service life</b>	++
<b>Filter fineness</b>	3 - 5 µm

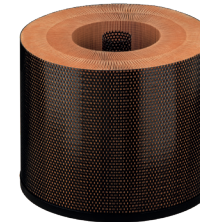
### Plastic H 34 1390

- With plastic handles
- Available as H 34 1390/14 KIT or H 34 1390/15 KIT



### Metal H 34 1380

- With metal handles
- Available as H 34 1380/14 KIT or H 34 1380/15



### Metal as longlife H 34 2280

- With metal handles
- Available as H 34 2280/14 KIT



# The Specialist Best

<b>Pleat</b>	Triple bellows or W-pleat
<b>Medium</b>	Synthetic
<b>Pressure stability</b>	3.0 - 3.5 bar
<b>Service life t</b>	+++
<b>Filter fineness</b>	1 - 2 µm

### Plastic H 34 1490

(Triple bellows)

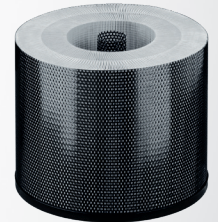
- With plastic handles
- Available as H 34 1490/14 KIT or H 34 1490/15 KIT



### Metal H 34 1480

(W-pleat)

- With metal handles
- Available as H 34 1480/14 KIT or H 34 1480/15



### Metal as longlife H 34 2380

(W-pleat)

- With metal handles
- Available as H 34 2380/14 KIT

