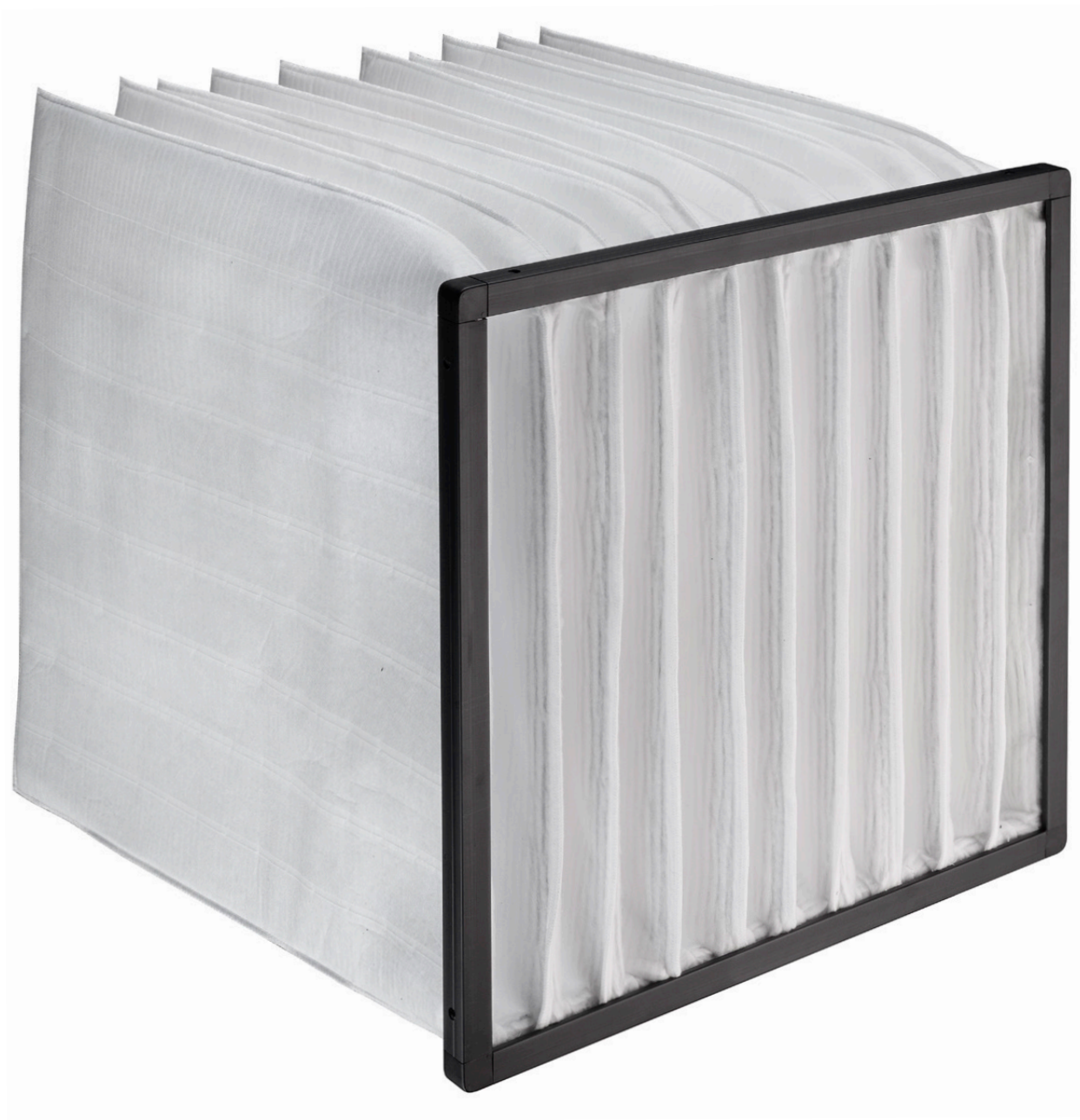


Airpocket EF



Leadership in Filtration

MANN+
HUMMEL

Airpocket EF

Long-life bag filter



Bag/pocket filter



Mid-range product



Made for HVAC

ePM10

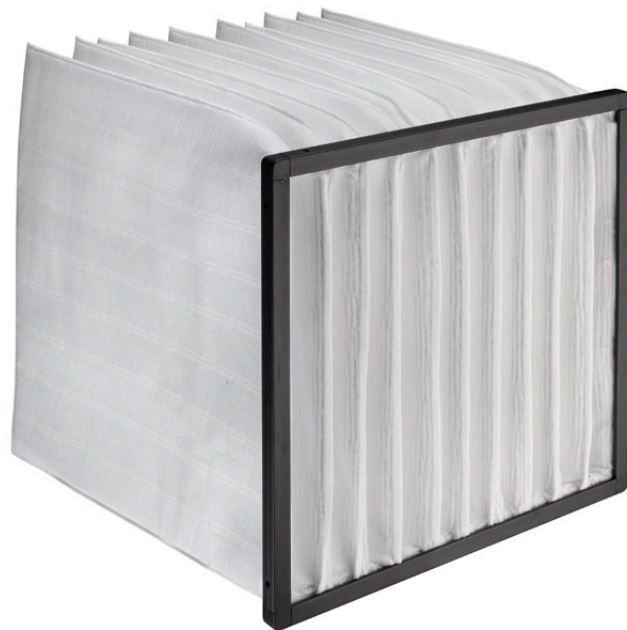
ePM1

Filter class to ISO 16890

M

F

Filter class to EN 779



KEY FACTS

- Highest energy efficiency
- Maximum reliability
- Multi-layer structure with built-in prefilter for maximum life

DESIGN

Pocket filters built with metal or plastic frame. For higher efficiency classes, pockets made from a synthetic, wave-structured media are tailor sewn with conical spacer seams for an optimal V shape. For lower efficiency versions, state-of-the-art synthetic media is used to achieve market-leading energy performance with an optimized number of pockets and raw material usage.

APPLICATIONS

Prefiltration or main filtration for air conditioning and ventilation systems.

Technical Data

Efficiency Class		Dimensions	Pockets	Flow Rate	Pressure Drop	Energy	Energy Class
ISO 16890	EN 779	mm	no.	m ³ /h	Pa	kWh/year	Eurovent 2019
ePM10 50%	M5	592 x 592 x 360	6	3400	45	584	B
ePM10 50%	M5	592 x 592 x 500	4	3400	40	531	A
ePM10 50%	M5	592 x 592 x 500	5	3400	35	434	A+
ePM10 50%	M5	592 x 592 x 500	6	3400	40	531	A
ePM10 50%	M5	592 x 592 x 635	4	3400	35	398	A+
ePM10 50%	M5	592 x 592 x 635	6	3400	35	403	A+
ePM10 60%	M5	592 x 592 x 360	4	3400	55	923	D
ePM10 60%	M5	592 x 592 x 500	4	3400	45	627	B
ePM10 60%	M5	592 x 592 x 635	4	3400	35	524	A
ePM10 70%	M6	592 x 592 x 500	4	3400	55	795	B
ePM10 70%	M6	592 x 592 x 500	6	3400	45	578	A+
ePM10 70%	M6	592 x 592 x 635	4	3400	40	573	A+
ePM10 70%	M6	592 x 592 x 635	6	3400	40	487	A+
ePM1 65%	F7	592 x 592 x 535	10	3400	75	934	A
ePM1 65%	F7	592 x 592 x 635	6	3400	100	1597	D
ePM1 65%	F7	592 x 592 x 635	8	3400	80	1048	B
ePM1 65%	F7	592 x 592 x 635	10	3400	60	757	A+
ePM1 85%	F9	592 x 592 x 500	8	3400	105	1531	C
ePM1 85%	F9	592 x 592 x 535	10	3400	80	1108	A
ePM1 85%	F9	592 x 592 x 635	8	3400	100	1186	A
ePM1 85%	F9	592 x 592 x 635	10	3400	75	882	A+
ePM1 90%	F9	592 x 592 x 500	10	3400	105	1396	A
ePM1 90%	F9	592 x 592 x 635	10	3400	90	1151	A+

Technical Data

Specification

Recommended air flow	Flow rate \pm 15 %
Heat resistance	Max. 70 °C
Regenerable	No
Rec. final pressure for efficient energy use acc. to EN 13053	Lowest value of initial pressure drop + 100 Pa, or initial pressure drop x 3
Moisture resistance	100 % rel. humidity
Incinerable	Yes (excluding metal frame versions)

Options

Frame	Plastic or galvanized steel
Gasket	EPDM flat gasket
Header depth	25 mm

We reserve the right to update, change or supplement the information provided in this document without prior notice.

0326 © MANN+HUMMEL