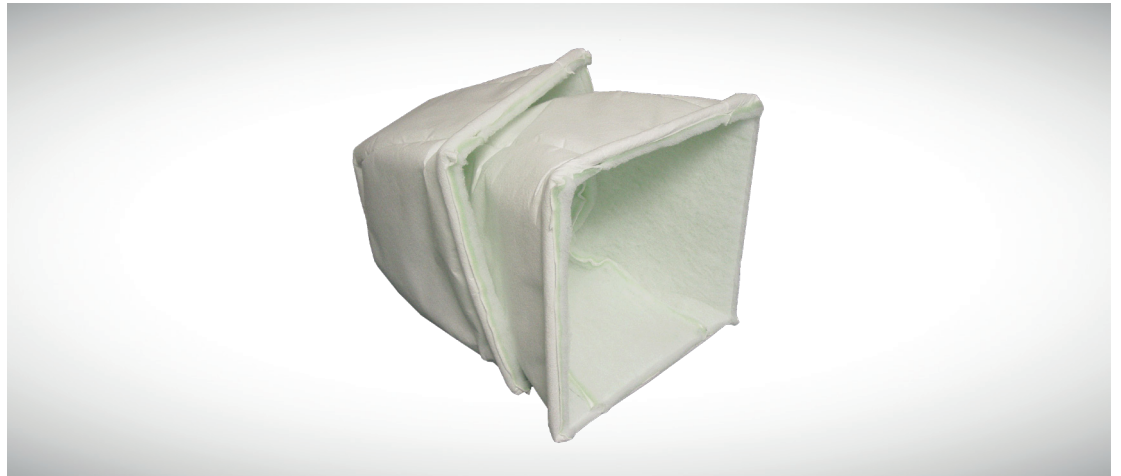


Tri-Dek® MERV 13 Extended Surface HVAC Cube Filters

FEATURES

- Depth loading media
- Extended surface area
- Trapezoid shape
- Self gasketing
- Reduced waste to landfill
- Extended filter service life
- Mold/mildew resistant
- MERV 13 efficiency

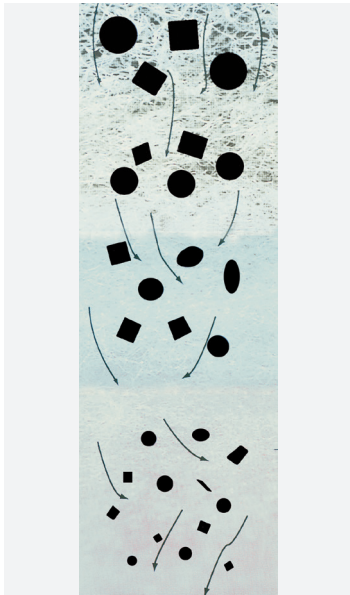


TRI-DEK® MERV 13 CONSTRUCTION & APPLICATIONS

The Tri-Dek® MERV 13 extended surface HVAC cube filter has media that utilizes different layers or deniers of media arranged from coarsest to finest to create a depth loading arrangement. The media is a unique needle felted, electrostatic-blended synthetic material. Larger particles are captured on the air entering side of the media and as the air works its way through the media, finer particles are removed.

The Tri-Dek® MERV 13 offers extended surface area in a unique trapezoid shape to maximize performance. The benefits of more surface area are a longer filter service life and a lower operating resistance (pressure drop). These will help you achieve lower energy cost, reduced filter related cost, higher efficiency, cleaner air handler surfaces, and reduced landfill waste.

Tri-Dek® media is resistant to moisture and microbial growth – much more so than traditional cardboard-framed filters, which inherently hold moisture regardless of what protective coatings are used.



Depth loading media



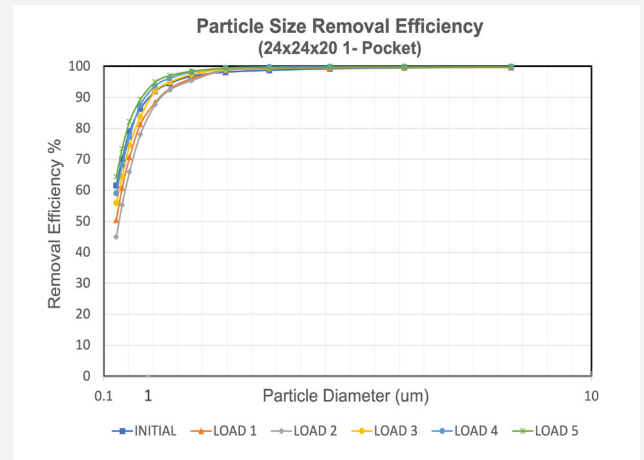
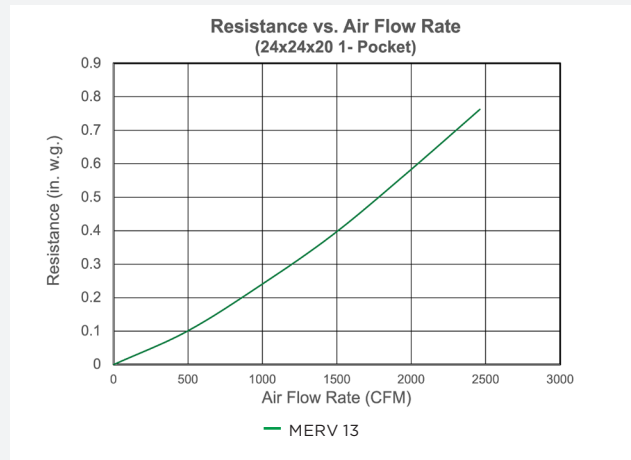
Self gasketing perimeter edge

TRI-DEK® MERV 13
PERFORMANCE DATA

Product	TRI-DEK® MERV 13
Media	Needle-felted electrostatic blended synthetic
Frame	Galvanized steel
Seal	Thermally generated and sewn
Efficiency	MERV 13
Initial resistance 10" deep 375 FPM (1.90 m/sec)	0.69 in.w.g. (172 Pa)
15" deep 375 FPM (1.90 m/sec) 500 FPM (2.54 m/sec)	0.50 in.w.g. (124 Pa) 0.73 in.w.g. (182 Pa)
20" deep 375 FPM (1.90 m/sec) 500 FPM (2.54 m/sec)	0.35 in.w.g. (97 Pa) 0.57 in.w.g. (142 Pa)
Recommended final resistance	1.5 in.w.g. (373 Pa)

TECHNICAL DATA

TRI-DEK® MERV 13



MANN+HUMMEL is committed to continual product development – all descriptions, specifications and performance data are subject to change without notice. MANN+HUMMEL products are manufactured to exacting criteria – there can be a ±5% variance in filter performance.

LOCAL REPRESENTATIVE