

Tri-Dek® FC 2-Ply Ring Panel and Link Filters

FEATURES

- Cost effective with high performance
- Eliminates dirty air bypass
- Mold resistant
- Moisture resistant
- Available in custom sizes
- Internal wire support
- Fits in side, front or rear access housings
- Reduced shipping and storage cost
- Reduced shipping and handling damage



TRI-DEK® FC 2-PLY CONSTRUCTION & APPLICATIONS

The Tri-Dek® FC is an economic 2-ply ring panel and link filter developed for the upgrade and replacement of traditional fiberglass disposable filters and in applications where a cost-effective filter is required.

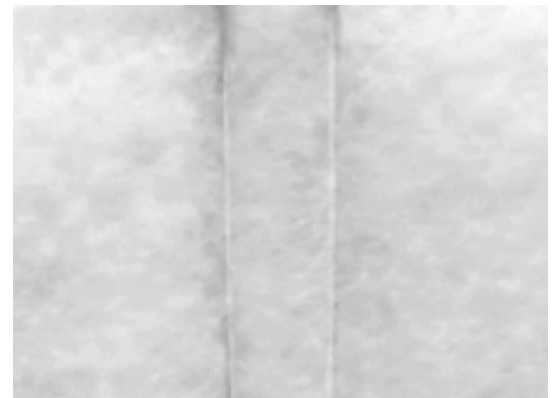
The Tri-Dek® FC has the same features and benefits as the rest of the Tri-Dek® family - including elimination of dirty air bypass. The selvedge edge of the Tri-Dek® FC panel and link filter will create a seal that will eliminate the bypass of unfiltered air - unlike cardboard framed filters that allow unfiltered air to go around the filter frame.

The Tri-Dek® FC is moisture and mold resistant, while cardboard framed filters will hold moisture leading to filter damage. This filter damage can lead to excessive air bypass and eventually filter collapse and the continued presence of moisture dramatically increases the risk of microbial growth.

The consequences of having microbial growth in an HVAC system can be devastating. The Tri-Dek® FC is available as either a ring panel or link and both are available in standard and custom sizes.



Close up of the Tri-Dek® FC ring panel



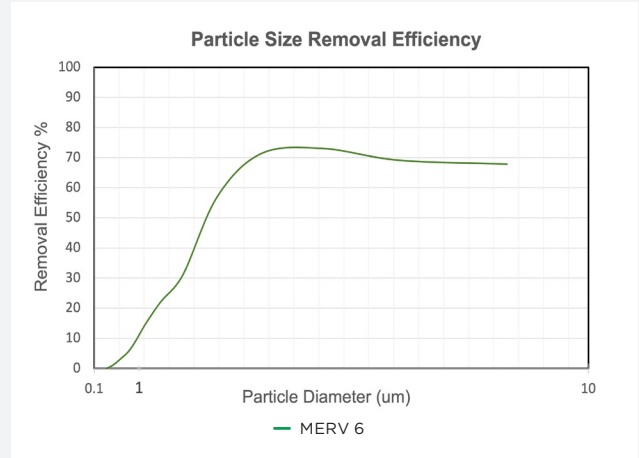
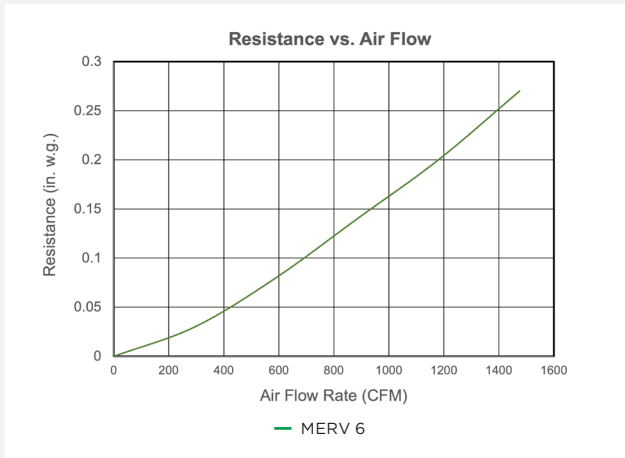
The selvedge edge of the Tri-Dek® FC ring panel and link filter create a seal that eliminates the bypass of unfiltered air

TRI-DEK® FC 2-PLY
PERFORMANCE DATA

Media	2-ply polyester
Recommended Air Flow	300 FPM (1.5 m/sec)
Initial Resistance	0.22 in.w.g. @ 300 FPM (55 PA @ 1.5 m/sec)
Recommended Final Resistance	1.0 in.w.g. (250 PA)
Efficiency	MERV 6

TECHNICAL DATA

TRI-DEK® FC 2-PLY



MANN+HUMMEL is committed to continual product development – all descriptions, specifications and performance data are subject to change without notice. MANN+HUMMEL products are manufactured to exacting criteria – there can be a ±5% variance in filter performance.

LOCAL REPRESENTATIVE