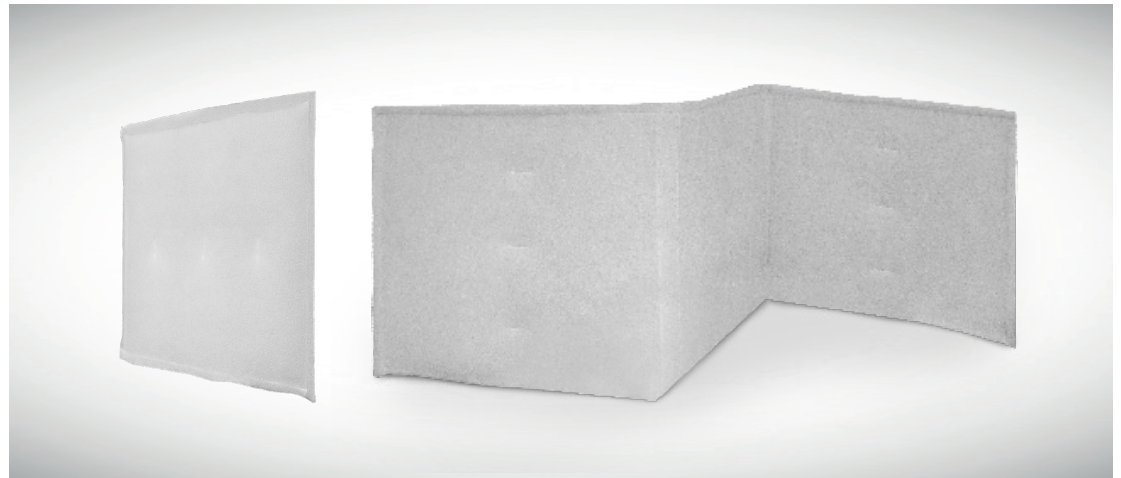


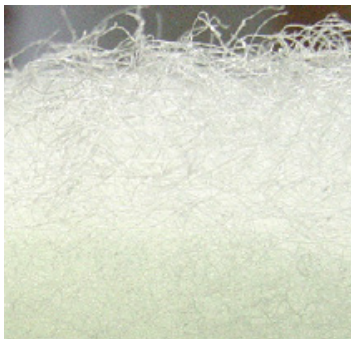
# Tri-Dek® XL 4-Ply Panel and Link Filters

## FEATURES

- Available in panels, links and ALAPS
- UL 900 Classified
- 4-ply media
- Post consumer recycled content
- Made in USA
- MERV 9



## TRI-DEK® XL 4-PLY CONSTRUCTION & APPLICATIONS



Graduated media density

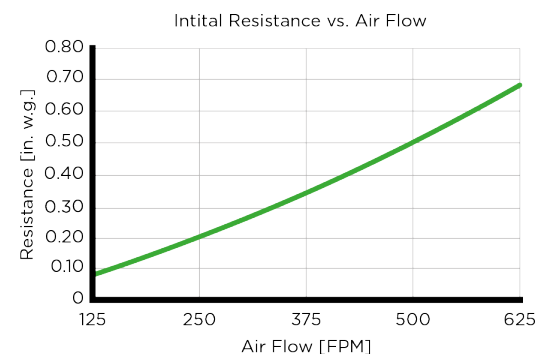
MANN+HUMMEL Tri-Dek XL media utilizes different media, arranged from coarse to fine, that allows the filter to capture the largest particles on the upstream side and finer particles as the air moves through the media. Tackifiers are used to enhance efficiency and to prevent particle migration. This depth loading allows Tri-Dek panels to outperform traditional pleated filters with a longer service life. This additional operating life translates into fewer filters to buy, install and dispose of, and greater cost savings overall.

Air bypass is a huge, undetected but costly problem in most HVAC systems. Cardboard framed filters are difficult to seal together, which can allow unfiltered air to pass between filter elements.

Another common issue are filters that do not completely fill up the track, allowing gaps of several inches. Tri-Dek panels and links are self-sealing and can be manufactured to fill the entire filter track, eliminating air bypass and providing cost savings.

MANN+HUMMEL Tri-Dek panel and link filters are constructed out of filter media and a heavy-duty wire frame for support and no cardboard frame, wire backing or adhesives. This makes Tri-Dek XL an extremely tough and durable filter, minimizing the risk of damage from shipping and handling.

## TECHNICAL DATA



**MANN+**  
**HUMMEL**

**TRI-DEK® XL 4-PLY**  
**PERFORMANCE DATA**

**SPECIFICATIONS**

Specifications	TRI-DEK® XL 4-PLY
Media	Synthetic, four deniers
Frame	9½ gauge galvanized wire
Final Resistance	1.0" W.G.
Efficiency	MERV 9 (per ASHRAE 52.2-2017)
Continuous Operating Temperature	200°F
Meets Requirements	ANSI/UL-900
Available Options	Antimicrobial treatment, link configuration, ALAP configuration, Tri-Dek roll-up

**PANEL FILTERS**

Nominal Size (in.) (H x W)	Actual Size (inches)		Air Flow Capacity (CFM)		
	H	W	300 FPM	500 FPM	625 FPM
12 x 24	11¼	23¼	600	1000	1250
15 x 20	14¼	19¼	625	1042	1302
15 x 24	14¼	23¼	750	1250	1563
16 x 16	15¼	15¼	540	900	1125
16 x 18	15¼	17¼	600	1000	1250
16 x 20	15¼	19¼	660	1100	1375
16 x 24	15¼	23¼	810	1350	1688
16 x 25	15¼	24¼	840	1400	1750
18 x 24	17¼	23¼	900	1500	1875
20 x 20	19¼	19¼	840	1400	1750
20 x 24	19¼	23¼	990	1650	2063
20 x 25	19¼	24¼	1041	1735	2169
24 x 24	23¼	23¼	1200	2000	2500
25 x 25	24¼	24¼	1302	2170	2713

**PANEL FILTER & LINK FILTER NOTES:**

- Special size filters are available – contact your local representative for additional information.
- Width and height dimensions are interchangeable. Actual dimensions are for the internal wire support – minimum perimeter selvage edge is ½”.
- Continuous operating temperature is 200°F

MANN+HUMMEL is committed to continual product development – all descriptions, specifications and performance data are subject to change without notice. MANN+HUMMEL products are manufactured to exacting criteria – there can be a ±5% variance in filter performance.

**LINK FILTERS**

Nominal Size (in.) H x W	Link Construction		Air Flow Capacity (CFM)		
	# Panels	Panel Size	300 FPM	500 FPM	625 FPM
12 x 48	2	12 x 24	1200	2000	2500
12 x 72	3	12 x 24	1800	3000	3750
15 x 40	2	15 x 20	1251	2085	2606
15 x 48	2	15 x 24	1500	2500	3125
15 x 60	3	15 x 20	1875	3125	3906
16 x 32	2	16 x 16	1080	1800	2250
16 x 36	2	16 x 18	1200	2000	2500
16 x 40	2	16 x 20	1320	2200	2750
18 x 32	2	18 x 16	1200	2000	2500
18 x 48	2	18 x 24	1800	3000	3750
18 x 64	4	18 x 16	2400	4000	5000
20 x 30	2	20 x 15	1251	2085	2606
20 x 32	2	20 x 16	1320	2200	2750
20 x 40	2	20 x 20	1665	2775	3469
20 x 45	3	20 x 15	1875	3125	3906
24 x 30	2	24 x 15	1500	2500	3125
24 x 32	2	24 x 16	1590	2650	3313
24 x 36	2	24 x 18	1800	3000	3750
24 x 40	2	24 x 20	2010	3350	4188
24 x 45	3	24 x 15	2250	3750	4688
25 x 32	2	25 x 16	1665	2775	3469
25 x 40	2	25 x 20	2070	3450	4313
25 x 48	3	25 x 16	2490	4150	5188
25 x 50	2	25 x 25	2610	4350	5438
25 x 60	3	25 x 20	3120	5200	6500

**LOCAL REPRESENTATIVE**