



Tri-Lock™ GS & FS  
Side-Access HEPA  
Housings

# Tri-Lock™ FS & GS

## Side-Access Housings

### FEATURES

- Available in either gasket seal (GS) or gel seal (FS)
- Factory assembled
- Available in galvanized and stainless steel
- Heavy duty construction
- True filter-locking mechanism
- Optional prefilter section
- Positive pressure door-to-housing seal
- Unique door hinge
- Factory-installed flange
- Large list of options

### APPLICATIONS

Tri-Lock™ HEPA side-access housing is designed for a range of applications, including:

- HVAC systems
- Air handlers
- Industrial plants
- Food industry
- Pharmaceutical
- Microelectronics
- Hospital
- Bio medical

### SIDE-ACCESS HOUSINGS FOR HEPA FILTERS AND OPTIONAL PREFILTERS

Tri-Lock™ GS and Tri-Lock™ FS HEPA side access housings are available to house either gasket or gel-seal HEPA filters. Both housings feature a heavy-duty design that is essential for the demanding and critical applications that require HEPA filtration.

The Tri-Lock™ GS and Tri-Lock™ FS are factory-assembled units of one-piece construction. Each housing is manufactured to meet the end-user requirements.

Both the Tri-Lock™ GS and FS have a standard construction of galvanized steel, but are also available in optional stainless steel. Straight seams are intermittently welded and silicone caulked to prevent air leakage. An optional prefilter section is available to accommodate 2" or 4"-deep prefilters.

Tri-Dim's Tri-Lock housings offer a true HEPA locking mechanism that will properly seal the filter in the housing, reducing the potential for air bypass in your critical environments.

The Tri-Lock™ GS and FS housings feature hand-torqued door latches to provide a positive-pressure door-to-housing seal and to ease filter



servicing. A unique door hinge allows the door to either remain on its hinges or be completely removed for easier filter change out.

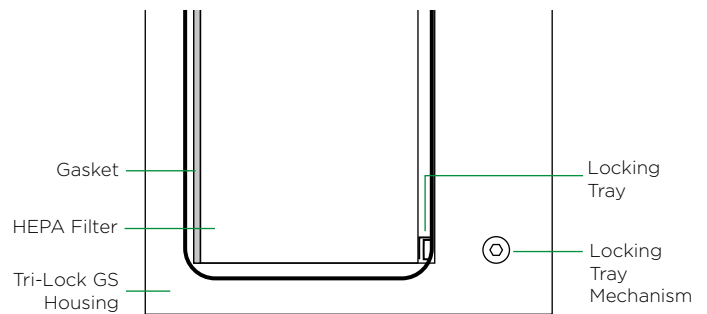
The Tri-Lock™ GS and FSI housings come with a factory-installed flange that is suitable for connection to either ductwork or the air handler system.

Both the FS and GS models are offered with a large number of options, so housings can be customized to meet any application-specific requirements.

# Tri-Lock™ FS & GS Versions

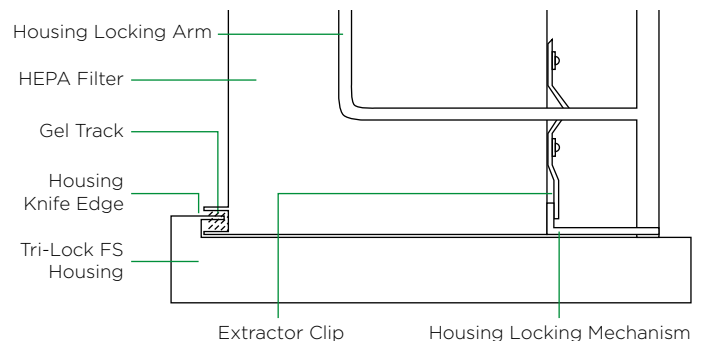
## TRI-LOCK GS™ - GASKET SEAL HEPA HOUSING

The Tri-Lock GS™ HEPA housing achieves a filter-to-housing gasket seal through a continuous flat mounting surface on the interior of the housing, which mates to a perimeter gasket on the filter. Top and bottom hand-operated crank locking mechanisms secure the filter(s) against the housing's perimeter mounting surface, compressing the gasket.



## TRI-LOCK FS™ - GEL SEAL HEPA HOUSING

The Tri-Lock FS™ HEPA Housing has a continuous-perimeter knife edge on the interior of the housing, which mates into the gel-filled perimeter channel on the face of the filter to create a seal between the two elements. The hand-operated locking mechanism guides and secures the filter into the knife-edge—penetrating the gel and forming a positive seal on the filter face. The locking mechanism is designed so that if the filter and the knife edge do not line up correctly the door will not shut.



## TRI-PURE™ HEPA & HEPAMAX™

Tri-Dim offers a full line of separator-style HEPA filters to meet your application demands. These include both standard capacity HEPA filters, which are rated at 250 FPM; and high capacity HEPAMAX™ filters rated at 500 FPM.

Tri-Dim offers both versions in gasket or gel seal variants, particleboard or metal-frame construction, and high temperature models to correspond with your requirements.

Varying levels of efficiency and testing methods are available starting at 99.97% @ 0.3 microns. Please contact your local sales representative or local office for more information on Tri-Dim's Tri-Pure™ HEPA and HEPAMAX™ filters.



# Tri-Lock™ FS & GS

## Technical Data

### SPECIFICATIONS

			UNIT WIDTH		
			1	2	3
UNIT HEIGHT	1	Capacity	2,000 CFM	4,000 CFM	6,000 CFM
		Dimensions	27¼ x 27"	27¼ x 51"	27¼ x 75"
		No. Filters	1	2	3
		Face Area	4 sq. ft.	8 sq. ft.	12 sq. ft.
	2	Capacity	4,000 CFM	8,000 CFM	12,000 CFM
		Dimensions	54½ x 27"	54½ x 51"	54½ x 75"
		No. Filters	2	4	6
		Face Area	8 sq. ft.	16 sq. ft.	24 sq. ft.
	3	Capacity	6,000 CFM	12,000 CFM	18,000 CFM
		Dimensions	81¾ x 27"	81¾ x 51"	81¾ x 75"
		No. Filters	3	6	9
		Face Area	12 sq. ft.	24 sq. ft.	36 sq. ft.

### NOTES

**Capacity** is reported in CFM at a flow rate of 500 FPM

**Dimensions** are reported in exact size in inches and Height x Width

**Number of filters** are reported in quantity and nominal dimensions of 24 x 24"

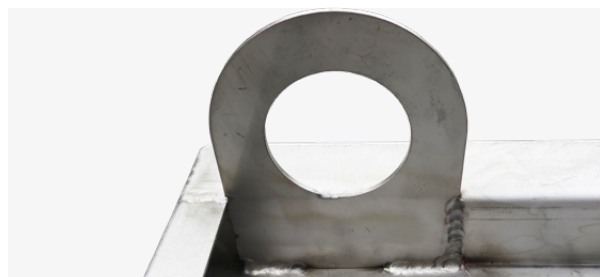
**Face area** is reported as face area of air filters - nominal size in square feet

**Standard housing depths** relative to filter depth: no prefilter = 21-½"; 2"-thick prefilter = 27"; 4"-thick prefilter = 27"

**Special and half size units** are also available

Tri-Dim Filter Corporation is committed to continual product development - all descriptions, specifications and performance data are subject to change without notice. Tri-Dim products are manufactured to exacting criteria - there can be a ±5% variance in filter performance.

### TRI-LOCK GS/FS™ OPTIONS



- Vertical flow application
- Double wall insulation
- High temperature gasket
- DOP port
- Photohelic gauge
- Lifting lugs
- Custom and drilled flanges
- Transitions
- Weather cover
- Static port(s)
- Magnehelic gauge
- Bottom access
- Seam welding
- Special sizes

### LOCAL REPRESENTATIVE