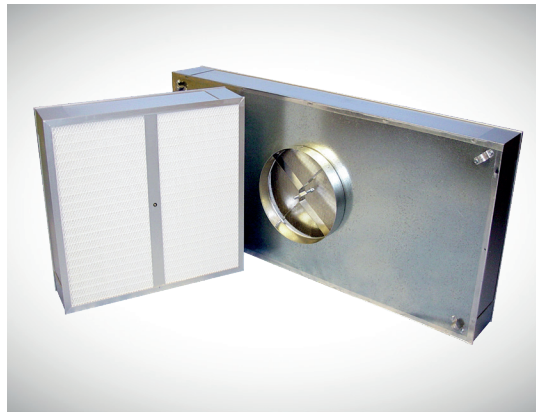


Microclass Terminal Module

Low Profile HEPA Ceiling Modules

FEATURES

- Low profile
- Adjustable distribution plate
- Scan tested
- Inlet collar (10" [254 mm] or 12" [305 mm])
- Can be configured to fit in gasketed T-grid system
- Can be configured to fit in gasketed gel seal grid that requires a knife edge
- Metal faceguard
- 2" (53 mm) & 4" (100 mm) media pack
- Anodized extruded aluminum frame
- Quality controlled manufacturing facility



DUCTED, DISPOSABLE, HEPA CEILING MODULES FOR CLEANROOMS

MANN+HUMMEL Air Filtration Americas Microclass HEPA/ULPA terminal modules are designed for use in Cleanroom applications requiring a compact footprint and high efficiency filtration. Applications include medical, pharmaceutical, microelectronics as well as other Cleanroom disciplines.

The Microclass terminal module features include a low profile, only 6" (152 mm) nominal cell sides, to allow for maximum space utilization in space sensitive applications. The module comes standard with hanger supports and an adjustable distribution plate. The distribution plate is adjustable with a screwdriver from room side through an access port located in the center divider for added convenience.

The Microclass terminal modules are compatible with our Microclass HEPA/ULPA panel filters. All Microclass HEPA/ULPA panel filters are available in efficiencies

from 99.99% @ 0.3 micron sized particles to 99.9995% on 0.1 to 0.2 micron sized particles, which is typically the MPPS (Most Penetrating Particle Size) for this filter in most applications.

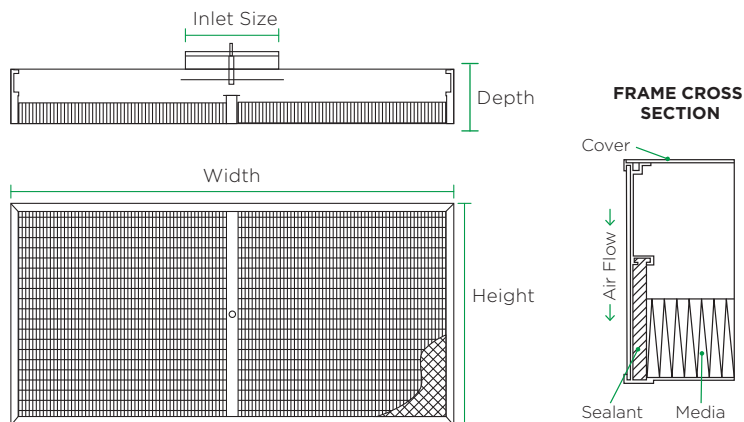
Microclass terminal modules are available with either a 10" (254 mm) or 12" (305 mm) collar to match your application requirements. In addition, Microclass terminal modules are designed to lie into a gasketed T-grid system or a gel seal grid with required knife edge.

MANN+HUMMEL Air Filtration Americas supplies a painted expanded metal grille on the downstream side of the media pack. The media pack is constructed of glass microfiber media mini-pleated into media packs 2" (53 mm) and 4" (100 mm) thick. The pleats are separated and secured by an adhesive bead separator. Our separator system is precisely applied to promote uniform air flow and to eliminate media to media contact and fiber break-off related with different pleating methods.

The Microclass media pack is manufactured on a computer controlled pleater for consistent and repeatable media packs. Microclass terminal modules are constructed of anodized extruded aluminum frames that are connected at the corners with our dual-corner fastener system that produces an airtight and rigid joint. The media pack is encapsulated into the frame on all four sides with a polyurethane sealant. The modules are available with optional insulation. The insulation is a 1-1/2" (38 mm) full aluminum back insulation applied to top of the housing plenum.

Microclass Terminal Module Technical Specifications

CONSTRUCTION DIAGRAM



MANN+HUMMEL Air Filtration Americas Cleanroom production area

TECHNICAL DATA

| NOMINAL DIMENSIONS H x W x D - Inches (mm) | ACTUAL DIMENSIONS H X W X D - Inches | PACK SIZE Inches (mm) | INLET SIZE Inches (mm) | EFFICIENCY | RESISTANCE @ 100 FPM "w.g. (PA) |
|---|---|--------------------------|---------------------------|------------|------------------------------------|
| 24 x 24 x 6 (610 x 610 x 152) | 23.625 x 23.625 x 5.92 | 2 (53) | 10 (254) or 12 (305) | 99.99% | 0.52 (129) |
| 24 x 48 x 6 (610 x 1219 x 152) | 23.625 x 47.625 x 5.92 | 2 (53) | 10 (254) or 12 (305) | 99.99% | 0.52 (129) |
| 24 x 24 x 6 (610 x 610 x 152) | 23.625 x 23.625 x 5.92 | 2 (53) | 10 (254) or 12 (305) | 99.9995% | 0.68 (169) |
| 24 x 48 x 6 (610 x 1219 x 152) | 23.625 x 47.625 x 5.92 | 2 (53) | 10 (254) or 12 (305) | 99.9995% | 0.68 (169) |
| 24 x 24 x 6 (610 x 610 x 152) | 23.625 x 23.625 x 5.92 | 4 (106) | 10 (254) or 12 (305) | 99.99% | 0.34 (85) |
| 24 x 48 x 6 (610 x 1219 x 152) | 23.625 x 47.625 x 5.92 | 4 (106) | 10 (254) or 12 (305) | 99.99% | 0.34 (85) |
| 24 x 24 x 6 (610 x 610 x 152) | 23.625 x 23.625 x 5.92 | 4 (106) | 10 (254) or 12 (305) | 99.9995% | 0.40 (100) |
| 24 x 48 x 6 (610 x 1219 x 152) | 23.625 x 47.625 x 5.92 | 4 (106) | 10 (254) or 12 (305) | 99.9995% | 0.40 (100) |

MANN+HUMMEL is committed to continual product development - all descriptions, specifications and performance data are subject to change without notice. MANN+HUMMEL products are manufactured to exacting criteria - there can be a $\pm 5\%$ variance in filter performance.

LOCAL REPRESENTATIVE