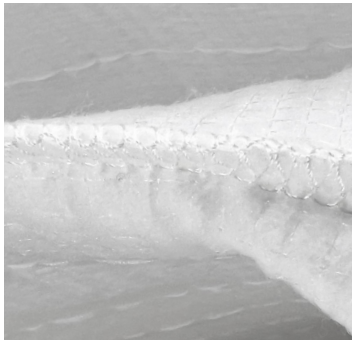


# ProPocket Nano+ M16 HVAC Bag Filters

## FEATURES

- MERV 16A efficiency
- Low operating resistance
- High dust holding capacity
- Rigid header construction
- Extended service life filter
- Burst strength 25 in. w.g.
- Available in galvanized and extruded aluminum frame options



ProPocket Nano+ M16 double locking quad stitch finished pocket stitching



Example of competitor non stitch pocket that leads to fiber break off and migration

## PROPOCKET NANO+ M16 CONSTRUCTION & APPLICATIONS

The ProPocket Nano+ M16 is an extended surface bag filter for use in HVAC applications that need high efficiency, high dust holding capacity and low operating resistance. The ProPocket Nano+ M16 features MERV 16A performance as tested by ASHRAE 52.2 Appendix J. This high efficiency does not come at the expense of resistance and dust holding.

The ProPocket Nano+ M16 also features low operating resistance with high dust holding, this translates into increased energy savings and an extended service life.

The ProPocket Nano+ M16 offers superior construction with a rigid header assembly that includes a secure method to attach pockets to the header to reduce pocket failure during the service life, even in extreme conditions. The ProPocket Nano+ M16 also features a double locking quad

stitch finished pocket stitching. This adds strength and reduces fiber breakoff and migration, especially when compared to a raw edge finish used by competition. The ProPocket Nano+ M16 is the filter to use in challenging and sensitive applications.



Close up of ProPocket Nano+ M16 frame

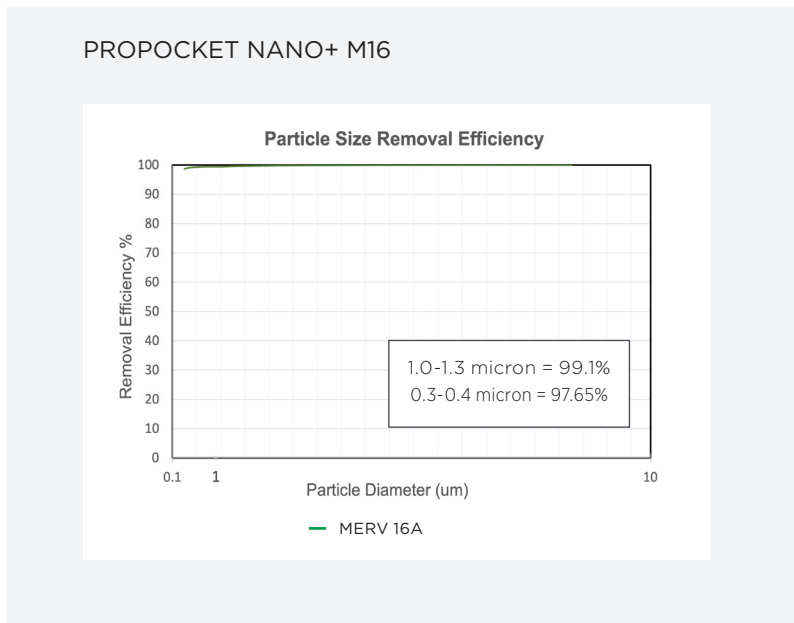
**PROPOCKET NANO+ M16**  
**PERFORMANCE DATA**

Nominal Depth	Nominal Size (in.) (WxHxD)	Actual Size (in.)			Air Flow @ Capacity (CFM)	Number of Pockets	Resistance @ Capacity (in. w.g.) - ProPocket Nano+ M16 24x24x22 - 10 pocket
		Width	Height	Depth			M16
22"	12x24x22	11.38	23.38	19.38	1000	4	0.28
	20x24x22	19.38	23.38		1667	5	
	24x24x22	23.38	23.38		2000	8-10	

Notes:

- Recommended final resistance = 1.5 in. w.g.
- Tapered pockets only available on 24 in. high pockets and pocket lengths from 15 in. - 22in.
- Galvanized and extruded aluminum frame options available
- Performance data is based on ASHRAE Test Standards 52.2 - 2017.

**TECHNICAL DATA**



**LOCAL REPRESENTATIVE**

MANN+HUMMEL is committed to continual product development - all descriptions, specifications and performance data are subject to change without notice. MANN+HUMMEL products are manufactured to exacting criteria - there can be a ±5% variance in filter performance.