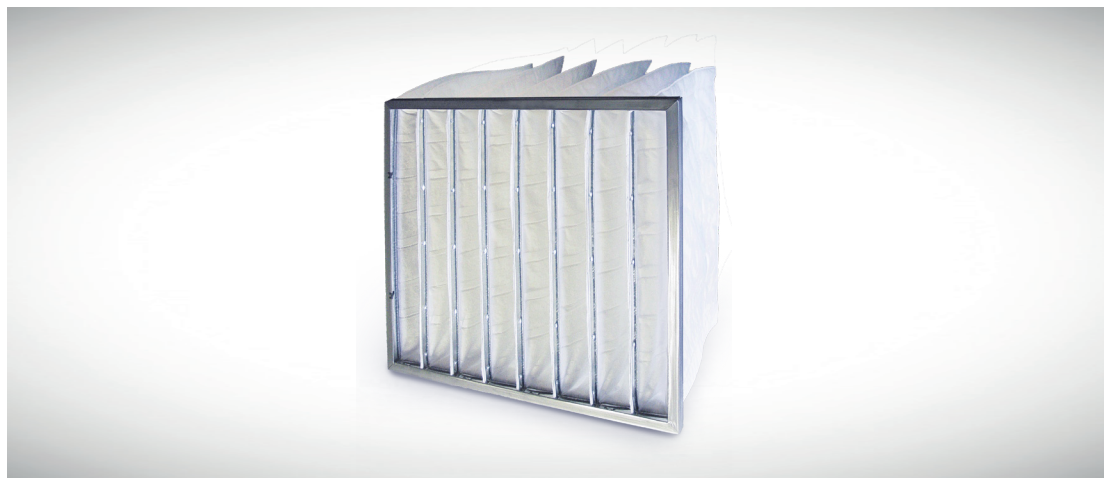


ProPocket Dual Ultra HVAC Bag Filters

FEATURES

- MERV 12, 14, 15, & 16 efficiencies
- Optional anti-microbial treatment available
- Synthetic media
- Wire support option allows for continual support
- Constructed in a controlled environment



PROPOCKET DUAL ULTRA CONSTRUCTION & APPLICATIONS

The ProPocket Dual Ultra HVAC bag filters feature an extended service life when compared to other synthetic bag filters. This longer service life is produced from the dual-stage media that was engineered for extreme dust holding characteristics.

These filters use an exclusive combination of two layers of synthetic media which allows them to outperform other synthetic bag filters. Available in efficiencies ranging from MERV 12 to MERV 16, these filters are best used in moisture related or humid applications such as wastewater plants, lumber mills, or industrial processing plants.

ProPocket Dual Ultra filters are constructed in a controlled environment with the highest level of quality. The pocket seams are sealed with an adhesive to ensure no leakage and to minimize the surface area lost due to pocket construction.

The pockets are secured to double turned galvanized hoops that are secured to a roll formed header. This process prevents the bypass of unfiltered air and adds rigidity.



Pocket seal



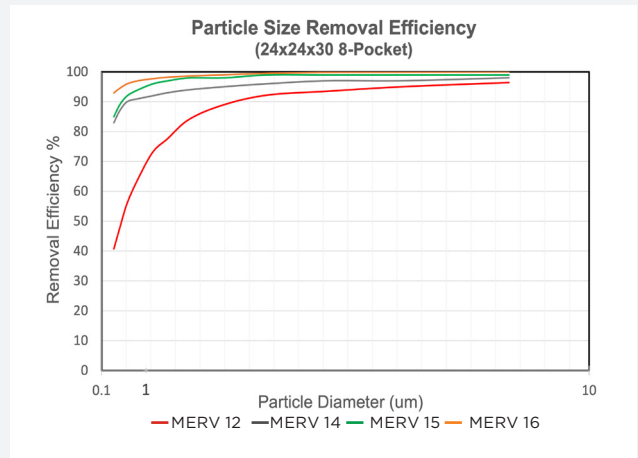
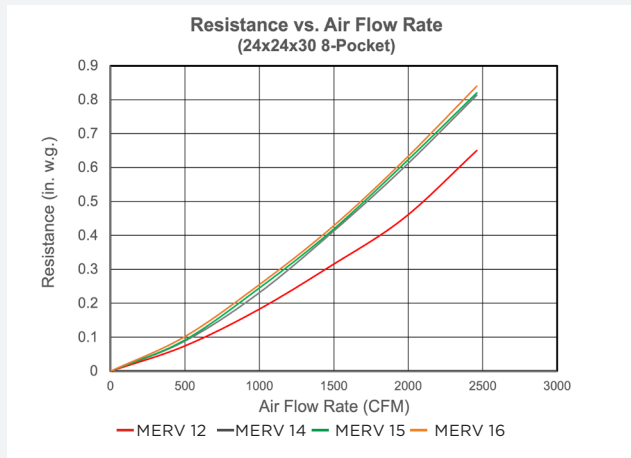
Cutaway view

**PROPOCKET DUAL ULTRA
PERFORMANCE DATA**

Nominal Depth	Nominal Size (in.) (WxHxD)	Actual Size (in.)		# of Pockets
		Width	Height	
15"	12x24x15	11.38	23.38	3-4
	20x24x15	19.38	23.38	5
	24x20x15	23.38	19.38	6
	20x20x15	19.38	19.38	6
	24x24x15	23.38	23.38	6-10
22"	12x24x22	11.38	23.38	3-5
	20x24x22	19.38	23.38	5
	24x20x22	23.38	19.38	6
	20x20x22	19.38	19.38	6
	24x24x22	23.38	23.38	6-10
26"	12x24x26	11.38	23.38	3-4
	20x20x26	19.38	19.38	6
	24x24x26	23.38	23.38	6-10
	12x24x30	11.38	23.38	3-5
30"	20x24x30	19.38	23.38	5
	24x20x30	23.38	19.38	6
	20x20x30	19.38	19.38	6
	24x24x30	23.38	23.38	6-10
	12x24x36	11.38	23.38	3-5
36"	20x24x36	19.38	23.38	5
	24x20x36	23.38	19.38	6
	20x20x36	19.38	19.38	6
	24x24x36	23.38	23.38	6-10

TECHNICAL DATA

PROPOCKET DUAL ULTRA



MANN+HUMMEL is committed to continual product development – all descriptions, specifications and performance data are subject to change without notice. MANN+HUMMEL products are manufactured to exacting criteria – there can be a ±5% variance in filter performance.

LOCAL REPRESENTATIVE



Tel: 877.752.5811 | airfiltration.mann-hummel.com/us-en