

# Gel Seal Identification Guide For HEPA/ULPA Filters

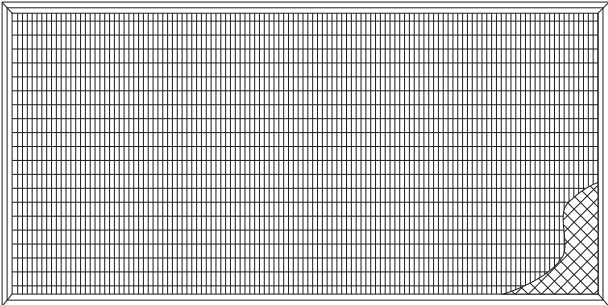
MANN+HUMMEL offers our HEPA and ULPA filters with a gel seal in two possible locations—inline or on the reverse perimeter. The information below will help you distinguish between these two products.

## REVERSE PERIMETER GEL SEAL

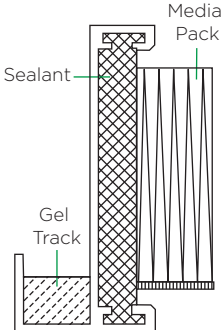
MANN+HUMMEL's reverse perimeter gel seal is located on the side of the filter—see drawing below. Typically this style of gel seal filter is used in the Microclass GSR. These gel seal replaceable filter hoods

and modules are used in Cleanroom applications, with the gel seal on the downstream side of the filter—see drawing below.

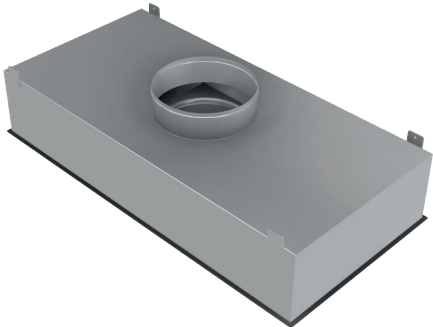
Drawing of Reverse Perimeter Gel Seal



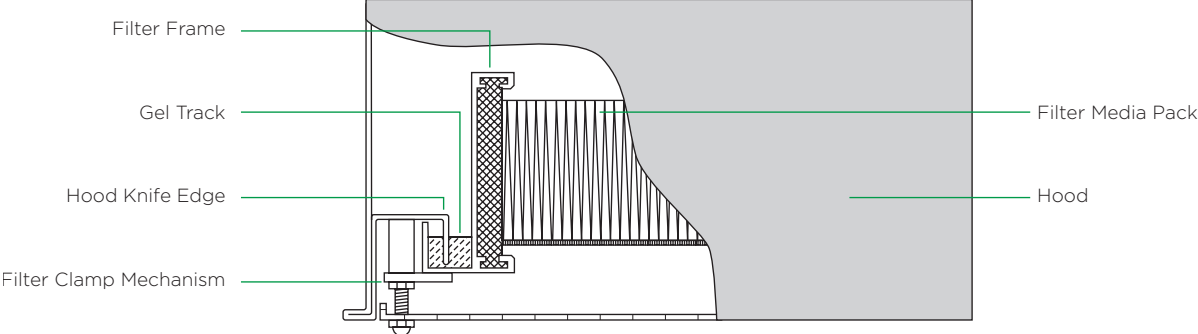
Cross Section Drawing



Gel Seal Replaceable Filter Frame Hood (GSR)



Gel Seal Replaceable Hood with Reverse Perimeter Gel Seal HEPA Filter



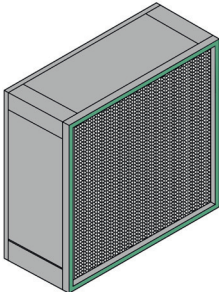
# Gel Seal Identification Guide For HEPA/ULPA Filters

## INLINE GEL SEAL

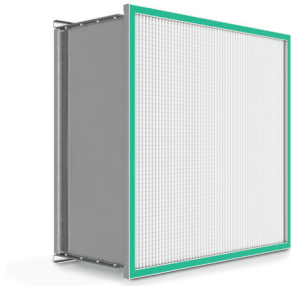
MANN+HUMMEL's inline gel seal is located on the face of the filter. Typically this style of gel seal filter is used in gel seal holding frames—like the Microbarrier HF, or side access housings—like the Microlock crank lock housing.

Please note: extractor clips are typically required if the filter is installed in a side access housing.

### Inline Gel Seal - Extruded Aluminium



### Inline Gel Seal - Metal

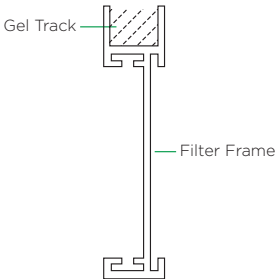


HEPA filter with extractor clips

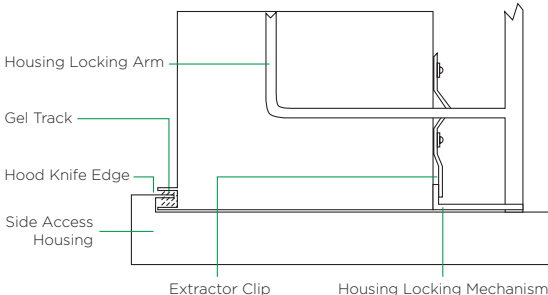
### Extractor Clips

The extractor clips assist in the installation and removal of gel seal HEPA filters from side access gel seal HEPA housings that are more than one filter wide. Without these extractor clips, the installation and removal of gel seal HEPA filters can become nearly impossible. Therefore, it is important to verify the need for extractor clips before ordering replacement HEPA filters.

### Cross Section Drawing



### Side Access HEPA Housing with Inline Gel Seal HEPA Filter and Extractor Clip



MANN+HUMMEL is committed to continual product development – all descriptions, specifications and performance data are subject to change without notice. MANN+HUMMEL products are manufactured to exacting criteria – there can be a ±5% variance in filter performance.

**LOCAL REPRESENTATIVE**